



KIT COLLA PROFESSIONALE | PROFESSIONAL GLUE KIT Art. 586



Art. 586
Kit professionale per la riparazione rapida dei lamierati senza intervenire con attività di sverniciatura. Un sistema moderno di grande valore aggiunto per le caratteristiche tecniche e qualitative dei numerosi accessori di cui si compone. Si utilizza con lo stesso principio dello spotter: invece di saldare un elettrodo, si incollano uno o più tasselli, in base all'ampiezza della superficie da riparare e si raddrizza la parte del lamierato interessata utilizzando l'attrezzo adeguato procedendo ad eliminare la colla residua mediante l'apposito solvente. La valigetta, pratica e robusta, contiene tutti gli accessori ed i consumabili.

Professional kit for rapid sheet metal repairs without paint removal. A modern, high added value system due to the technical characteristics and quality of the numerous accessories. It is used with the same principle as the spotter: instead of welding an electrode, one or more pieces are glued, based on the size of the surface being repaired, and the sheet metal part is straightened using the tool, then the residual glue is removed using solvent. The practical, robust case contains all the accessories and consumables.

Dotazioni standard | Standard equipment

Art. C2300300	Valigetta nera /Black briefcase	Art. 07508350	5 x ventosa alta trazione ø40 mm / 5 x high traction glue pads ø40 mm
Art. 179V	Pistola manuale in alluminio con piedi snodati / Hand puller in aluminium with mobile feets	Art. 07508400	25 x ventose sferiche assortite / 25 x assorted spherical glue pads
Art. 740	Mini traversa con piedi fissi, tirante a 4 ganci (L= 400 mm)	Art. 07508450	Conf. 25 ventose varie forme (5 pz x 5) / Kit 25 glue pads different shapes (5 pcs x 5)
Art. 218	Mini Dent Lifter with supports, puller and 4 hooks (L= 400 mm)	Art. 07508970	5 x confezione multipads assortiti / 5 x assorted multipads
Art. 171P	Martello in alluminio penna tonda / Aluminium round pen hammer	Art. D6300900	Bulino per colla / Glue burin
Art. 06531300	Martello in ferro M 14 con impugnatura / M14 slide hammer with rubber handle	Art. 07506100	Conf. 10 pz colla nera / 10 pcs black glue sticks
Art. 06533800	Testina in alluminio M14 per tiro ventose / M14 aluminium adapter for glue pads	Art. 07506200	Conf. 10 pz colla opalino / 10 pcs opaline glue sticks
Art. 07500050	Testina m.14 per filetti m6 / M14 adapter for m6 threaded pin	Art. C7501800	Pistola professionale per colla / 1 pc professional glue gun
Art. 07500800	10 x golfare m.6 / 10 x threaded pull eye m6		
Art. 07508100	5 x ventosa tonda ø20 mm. / 5 x glue pads ø20 mm		
Art. 07508100	5 x ventosa ovale / 5 x oval glue pads		
Art. 07508200	5 x ventosa ø30 mm. / 5 x glue pads ø30 mm		
Art. 07508300	5 x ventosa c/taglio ø40 mm. / 5 glue pads with reliefs ø40 mm		
Art. 07508050	5 x ventosa alta trazione ø20 mm / 5 x high traction glue pads ø20 mm		
Art. 07508150	5 x ventosa alta trazione ovale / 5 x high traction oval glue pads		
Art. 07508250	5 x ventosa alta trazione ø30 mm / 5 x high traction glue pads ø30 mm		



Consumabili per Art. 580, 585 e 586 | Consumables for Art. Art. 580, 585 and 586

Art. 07506100
Conf. 10 pz colla nera
10 pcs black glue sticks



Art. 07506150
Conf. 500 pz colla nera
500 pcs black glue sticks

Art. 07506200
Conf. 10 pz colla opalino
10 pcs opaline glue sticks



Art. 07506250
Conf. 500 pz colla opalino
500 pcs opaline glue sticks

Art. 07500050
Conf. 10 pz golfare M6
10 pcs threaded pull eye M6



Art. 07508000
Conf. 5 pz ventosa tonda Ø20
5 pcs glue pads Ø20



Art. 07508100
Conf. 5 pz ventosa ovale
5 pcs oval glue pads



Art. 07508200
Conf. 5 pz ventosa tonda Ø30
5 pcs pz glue pads Ø30



Art. 07508300
Conf. 5 pz ventosa tonda Ø40
5 pcs glue pads Ø40



Art. 07508050
Conf. 5 pz ventosa tonda Ø20 - alta trazione
5 pcs glue pads Ø20 - high traction



Art. 07508150
Conf. 5 pz ventosa ovale - alta trazione
5 pcs oval glue pads - high traction



Art. 07508250
Conf. 5 pz ventosa tonda Ø30 - alta trazione
5 pcs glue pads Ø30 - high traction



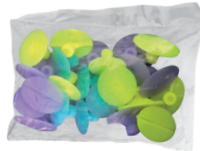
Art. 07508350
Conf. 5 pz ventosa tonda Ø40 - alta trazione
5 pcs glue pads Ø40 - high traction



Art. 07508400
Conf. 25 pz ventosa sferica - assortito
25 pcs spherical glue pads - assorted



Art. 07508450
Conf. 25 ventose varie forme
(5 pz x 5)
Kit 25 glue pads different shapes
(5 pcs x 5)



Art. 07508910
Conf. 10 pz ventosa azzurra tonda Ø36
10 pcs oval light blue glue pads Ø36



Art. 07508920
Conf. 10 pz ventosa gialla tonda Ø40
10 pcs round yellow glue pads Ø40



Art. 07508930
Conf. 10 pz ventosa gialla ovale 33x47
10 pcs oval yellow glue pads 33x47



Art. 07508940
Conf. 10 pz ventosa viola tonda Ø40
10 pcs round violet glue pads Ø40



Art. 07508950
Conf. 10 pz ventosa viola ovale 33x47
10 pcs oval violet glue pads 33x47



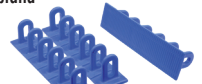
Nota tecnica

L'alta trazione di questa serie di ventose si deve alla particolare conformazione del fondo. Le scanalature consentono una migliore distribuzione e presa della colla

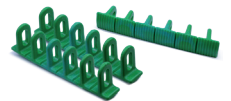
Technical note
The high traction of this series of suction cups is due to the special shape of the bottom. The grooves spread the glue and provide a better gripping action.



Art. 07508500
Conf. 3 pz blu multipads 6x36x156 piana
3 pcs blue multipads 6x36x156 flat



Art. 07508600
Conf. 3 pz verde multipads 6x22x156 - sferica
3 pcs green multip. 6x22x156 - spherical



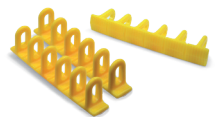
Art. 07508700
Conf. 3 pz grigio multipads 6x50x156 - piana
3 pcs grey multipads 6x22x156 - flat



Art. 07508800
Conf. 3 pz rosso multipads 6x22x156 - piana
3 pcs red multipads 6x22x156 - flat



Art. 07508900
Conf. 3 pz yellow multip. 6x22x156 - conica
3 pcs yellow multipads 6x22x156 - cone-shaped



Art. 07508970
Conf. 5 pz multipads - assortiti
5 pcs multipads - assorted

